



Type C (m)

4 Bedroom, 4 Bathroom
Duplex



Type C (m) Duplex

Area Summary

Unit Lower

131m²

Unit Upper

95m²

Covered Patio 1

19m²

Covered Patio 2

22m²

Total

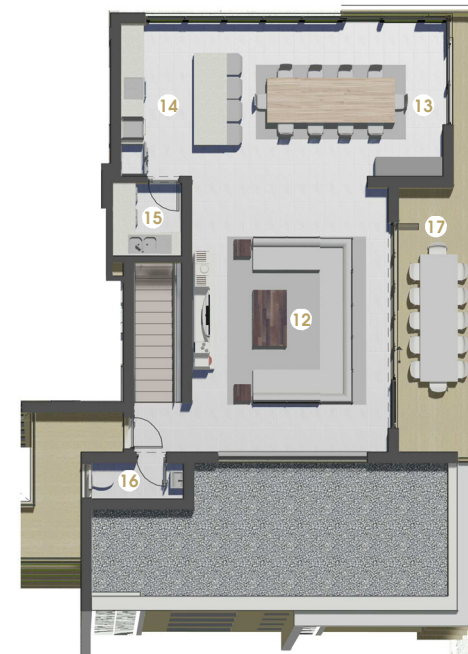
267m²

Lower Floor

- ① Pyjama Lounge
3,4m x 5,6m
- ② Study Nook
3,6m x 3,4m
- ③ Master Bedroom
3,7m x 6,0m
- ④ En-Suite Bathrm 1
3,7m x 2,4m
- ⑤ Bedroom 2
3,4m x 3,2m
- ⑥ En-Suite Bathrm 2
1,4m x 1,7m
- ⑦ Bedroom 3
3,7m x 3,2m
- ⑧ En-Suite Bathrm 3
2,6m x 1,7m
- ⑨ Bedroom 4
3,7m x 3,0m
- ⑩ En-Suite Bathrm 4
2,6m x 1,3m
- ⑪ Covered Patio 1
3,4m x 2,3m



Artist Impression



Artist Impression

Upper Floor

- ⑫ Living
7,1m x 5,2m
- ⑬ Dining
4,1m x 5,8m
- ⑭ Kitchen
4,1m x 2,5m
- ⑮ Scullery
2,0m x 1,8m
- ⑯ Guest Toilet
1,0m x 2,4m
- ⑰ Covered Patio 2
7,1 x 2,3m