

JK DESIGNS



JK Designs is an architectural firm and interior design studio that **challenges the mundane and motivates emotive design** through dedicated client relationships, harmonious integration of technologies, and distinct, unique visions. We have quickly become a recognized brand in architectural design through exemplary service and unrivalled designs.

We have been involved in a multitude of projects across Southern Africa and have extended our reach into the international spheres, creating breathtaking residences that truly reflect our clients and their needs. Through the process of thoughtful design and ultra-realistic renders we are able to provide an unmatched service that guarantees our client's satisfaction.

Our legacy is to create iconic designs that transcend boundaries and transform the design landscape around us.

JK Designs offers a range of architectural, interior design and project management services that enable the managing of a project from concept through to close-out.

**ARCHITECTURE
INTERIOR DESIGN
PROJECT MANAGEMENT**

Every home deserves to be an icon.
Every icon deserves a soul.





JK

839 THE HILLS

THE HILLS ESTATE, PRETORIA

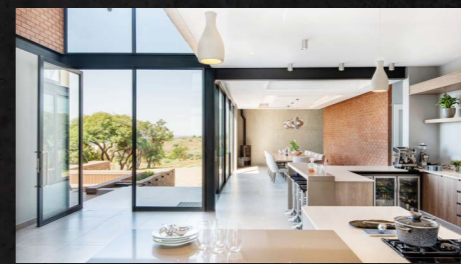
The double-pitched glass facade creates an iconic landmark form on the approach to this residential design. The linear facade naturally draws the eye to the entrance, creating an instinctive path of entry into the home.

Each element is carefully placed within the composition, allowing for an overall sense of harmony and tranquility. The interior floor plan opens towards the expansive view through a beautifully shaped window, creating visual captivation.

The clean, modern interior emphasizes the openness of the space and draws attention towards the many vistas. Each area in the interior sits comfortably within the framework of the house, emphasizing the overall language of the harmony.

800 m²

Gentle





342 BLAIR ATHOLL

BLAIR ATHOL ESTATE, CENTURION

If first impressions are important, this design wastes no time in introducing itself as sensational. The strong line of the roof drops down to grandly announce the entrance foyer, delicate glass set in contrast to the angled black column. The white facade bends towards the entrance, beautifully organic next to the sharp geometric shapes above and besides it. The house encourages movement towards it, welcoming visitors inside to experience more of its narrative.

The organic path at the entrance is mirrored in the shape of the roof, which elegantly covers the balcony at the back of the house and creates a distinct sculptural feature. A courtyard is created in the centre of the floor plan, allowing for garden views & fresh air from every corner of the house. The large patio, with pool on one side and courtyard on the other, creates infinite options for entertainment and enjoyment.

📏 900 m²

🏡 Gentle



JK



JK



866 THE HILLS

THE HILLS ESTATE, PRETORIA

This multi-level residential design is striking & unique, catching the eye through its strong, angled forms & floating glass box that extends out of the house. The entrance approach is a cinematic experience; the incredible silhouette enticing you forward as the full artistic display slowly reveals its depth of creativity & imagination. The sophisticated form incorporates themes of nature through lengthy views, planted roof tops, and secluded outdoor spots where the landscape can be appreciated.

The lounge & gym are elegantly encased in glass to remove visual barriers towards the outside, & these become features that are enjoyed from other points in the house. The U-shape floor plan allow for areas of exposure and seclusion, creating an interesting dynamic across the plan. Spaces flow into one another while remaining separate enough to encourage intrigue around every corner. This design is marvelously distinct, making this house an extraordinary landmark in its surroundings.

📏 1380 m²

📍 Steep





1139 BRYANSTON

BRYANSTON, SANDTON

A sleek and modern twist on the traditional double pitch archetype for a house design in Bryanston.

The house is framed by lines which emphasize the pitched form and carve out areas of intrigue and interest. This adds layers and depth to the facade, while maintaining the overall composed composition.

The layout lives out towards the outside, framing views and encouraging natural movement towards the outside spaces. The green house as a feature stands strong and bold, while remaining perfectly at home within the larger picture. The combination of lighter shades and timber lends a classic look to the house, a design to last a lifetime.

📏 1260 m²

🏡 Gentle



JK



JK



22 NAUTILUS BAY COASTAL RESERVE

NAUTILUS BAY COASTAL RESORT,
MOSELBAY

A house set against the most beautiful backdrop; nestled into the landscape with blue sea stretching far into the distance. Open on both sides, the house embraces two unique settings; one of endless ocean and the other of protected garden courtyard.

The house allows for expansive vistas of sea & sky through horizontal lines of steel. This is perfectly balanced with warm, vertical timber cladding that encases sections of the exterior and defines the iconic pitched silhouette.

Overall, the house is a sculptural masterpiece in its surrounding. Elegant & bold in form, yet completely in harmony with its environment. The perfect statement of thoughtful & composed design.

250 m²

Steep





4145

WATERFALL

WATERFALL ESTATE, MIDRAND

Inspired by drama, this stunning residential design assertively combines contrasting elements into a remarkably intriguing creation. The garage exterior, moody and mysterious, juxtaposes the openness of the glass entrance facade to create visual dynamics that demand continued attention.

Bold and unwavering, the timber screen rectangle form sits perfectly balanced in relation to the rest of the facade, while the planted roof provides added elements of playful enchantment.

The back of the house opens up to the garden with subtle terraces that encourage movement outdoors. The openness of the facade allows for continued views onto the pool and garden, fostering a connection to nature.

900 m²

Gentle



JK



3365 WATERFALL

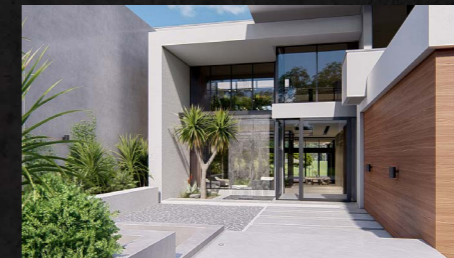
WATERFALL ESTATE, MIDRAND

The strong, framed structure of this contemporary residence establishes itself in the surroundings, creating a classic and timeless composition. The open-plan layout is based around a feature planted atrium that brings nature into the space and acts as the inspiration around which the interior is designed. The warm, natural tones and textures of wood and natural stone compliment the planted areas in and around the house, and helps the large home feel welcoming and safe.

The pops of colour and interesting artwork features ensure that your attention never wanes, as the variety of components coming together creates interesting compositions and helps bring out the unique personality of the home. The interior flows onto the exterior deck where the pool and the boma can be enjoyed and garden appreciated.

📏 1200 m²

🏡 Gentle





3215 MIDRAND

MIDRAND, GAUTENG

This residential design is characterised by expressive, sculptural forms that immediately draw and hold attention, establishing the house as a landmark figure in the landscape. The heavy, rectangular shape on the entrance façade sits firmly on top of the delicate, glass entrance, creating an experience for the guests entering into the space.

The web-like steel structures extend over the house and reappear in a different form to create the patio covering and to define the balconies. The floor plan forms an L-shape that overlooks the pool and garden, which has been designed to evoke drama and excitement. This residence offers areas of interest and intrigue around every corner.

1 030 m²

Steep



JK



507

ZEVENFONTEIN

ZEVENFONTEIN, MIDRAND

This modern residence sets the ideal standard for an entertainer's dream. The facade of the house prioritizes the horizontal plane to allow for seamless vistas towards the outside, opening up the interior layout into stately proportions.

The thoughtful accentuation of areas within the house creates pockets of spaces that allow for privacy within the open floor plan, encouraging conversations and connections.

The emphasis on the view fosters the visual connection between the interior & exterior, inviting nature inside as a welcome juxtaposition to the clean, modern interior. The house sits confidently, yet tranquilly, in its surroundings, exuding a sense of immortality.

🏠 1345 m²

📈 Steep



4115 WATERFALL

WATERFALL ESTATE, MIDRAND

This interior design is characterised by warm, natural tones and textures that create an oasis and retreat away from the busy world. The textures of wood and natural stone inspire scenes of nature, while the darker hues and strong blacks add an element of modernity to the space. The overall muted tones and colours tie the space together effortlessly, with varieties of details and textures adding the excitement to the space.

The accent colours, expertly chosen and arranged, draw the eye without taking attention away from the rest of the space. Each room is carefully crafted for optimal comfort and relaxation. The view into the pool is a thrilling addition to the lounge area that creates a unique and whimsical space.

📏 1 123 m²

🏔 Moderate



BLACKHEATH UK

SURREY, UNITED KINGDOM

This modern residence is situated on a beautiful hill in the UK, overlooking a lush forest and rolling green hills. This alteration project involved converting the existing, out-dated face brick building into a stylish and contemporary residence that could be fully appreciated in the surroundings.

The result is a stunning composition that emphasises the magnificent view through large glass facades and linear-framed balconies. The timber clad exterior helps tie the modern form into the earthy backdrop, and the sunken, landscaped approach to the house gently announces the home while the entrance interior grandly opens up to display the full extent of the floor plan and the expansive view.

📏 680 m²

🏔 Steep

984 COPPERLEAF

COPPERLEAF ESTATE, CENTURION

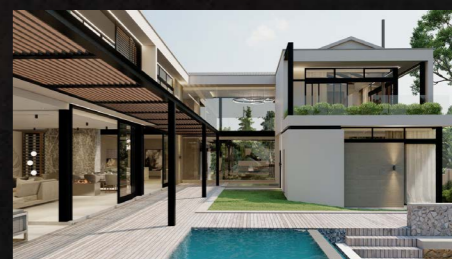
This dynamic and intriguing residential design is the perfect statement in how carefully crafted & sculpted spaces can transform everyday living into an extraordinary adventure.

The front facade displays a balanced scene of perfectly proportioned shapes arranged with layers of depth. The framed entrance encourages movement into and through the house.

The back of the house opens onto a sensational outdoor living space, covered by a sculpted pergola that elevates the space to new levels of luxury. The line between inside and outside becomes insignificant as the entire side of the house opens onto the garden. An entertainer's dream becomes reality in a space thoughtfully shaped to perfection.

📏 860 m²

🏡 Moderate



3140 WATERFALL

WATERFALL ESTATE, MIDRAND

The facade of this residence is defined by a variety of rectangular box forms that shape and denote different areas of the exterior.

These forms draw attention to specific features while adding depth and layering to the building, giving it a variety of eye-catching elements that hold your attention. The delicate glass windows within the strong frames give the building a nice contrasting effect while emphasizing vistas throughout the house.

The shaded pergola walkway outside combined with the sunken boma and fire pit next to the pool creates pockets of safe and tranquil spots of retreat and relaxation.

📏 690 m²

🏡 Gentle

455 MOOIKLOOF

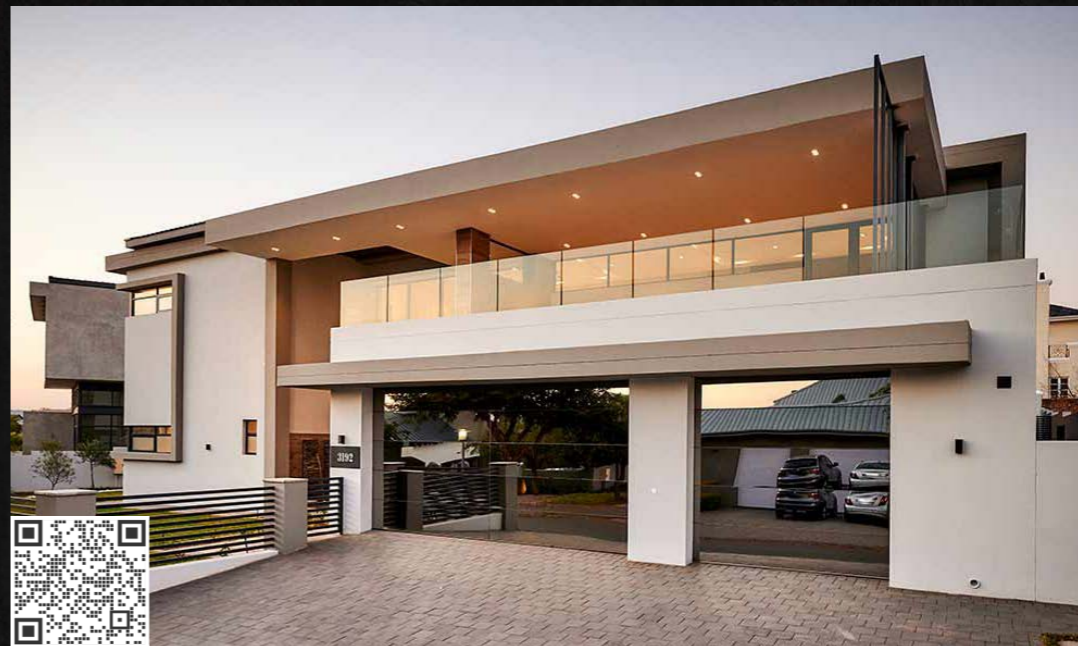
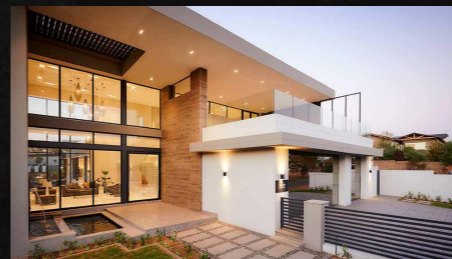
MOOIKLOOF ESTATE, PRETORIA

This residence sits like a monument in the landscape, bold and assured in form and size. The organic flair of the path approaching the house contrasts the straight outline of the façade, which encases large, delicate glass windows to create defined views. Both the ground floor and first floor live out onto the exterior patio and balcony that overlooks the sloped site and the magnificent views.

The living areas are open on both sides to create a sense of spaciousness and to allow breezes to flow through the space. The deck and infinity pool gives the entire house a floating effect, where entertainment can occur within the treetops. The private courtyard on the other side of the house creates opportunity for retreat and privacy, and a grounding into nature.

📏 600 m²

📍 Steep



3192 WATERFALL

WATERFALL ESTATE, MIDRAND

The elegant outline of this residence upon approach immediately announces its grandeur; the double-volume glass entrance welcoming visitors into the open-plan spaces within. The sleek and modern finishes accentuate the design, drawing attention to features such as the staircase and double-sided open fireplace.

The spacious rooms give an air of luxury that allows of each area in the house to become a unique expression of enjoyment. The house opens up to the long pool and covered boma area, which makes entertaining effortless through spaces that flow into one another. Every room on the ground floor has access to different areas of the garden, allowing privacy and retreat from the rest of the spaces.

📏 800 m²

📍 Flat

171

THE RIDGE

THE RIDGE ESTATE, PRETORIA

This elegant and sophisticated house is composed of strong vertical and horizontal forms that are thoughtfully balanced with large, expansive glass windows and overhangs that provide depth and variation to the facade. The light-toned colour along with the natural stone and wooden garage doors gives the exterior a timeless and classic appearance.

The grand glass entrance becomes the defining feature of the design, bold and beautifully silhouetted against the sky, giving a small taste of what lies within the walls. Inside the house, the double-volume foyer and open-plan layout provides a spacious and luxurious quality, while the sleek, modern finishes accentuate the charming design.

509 m²

Gentle



201

COPPERLEAF

COPPERLEAF ESTATE, CENTURION

Bold and unapologetic, this interior design makes use of bright colours and gorgeous imagery to add vibrance and excitement to this residence. The eye-catching murals are expertly paired with complimentary colours and a variety of textures that tie the room together without it becoming crowded or busy. The base neutrals and warm tones provide a backdrop to the features, and create a space that functions as a cosy retreat from the world.

The personalities of the owners of this home shine through to bring unique character and intrigue to the rooms to create a once-in-a-lifetime design experience. Every detail and every piece of furniture has been specially considered to suit the room and its specific function and maximise the overall design effect.

800 m²

Flat

396

LOMBARDY

LOMBARDY ESTATE, PRETORIA

This contemporary residence consists of a layered facade with strong, horizontal lines that create depth and outline a frame for the delicate, double-volume glass facade. The open-plan layout cultivates a spacious atmosphere where spaces flow into each other, encouraged by the indoor water channel that begins at the entrance and extends through the house and out into the outdoor entertainment area. The centre atrium garden provides a natural balance to the sleek and modern interior.

Outside, the pool shapes and defines distinct areas within the larger entertainment space. The terraces allow for unique applications of spacial use while tying everything together in a cohesive arrangement. The sunken boma becomes a feature structure within the landscape, and the inside and outside spaces are connected by uninterrupted views through frameless glass doors.

📏 800 m²

🏡 Gentle



209

THE RIDGE

THE RIDGE ESTATE, PRETORIA

This smaller residence utilizes an open floor plan and expansive folding-stacking doors on either side to create a space that effortlessly merges interior and exterior areas together, creating a larger living experience that takes advantage of South Africa's temperate climate.

The black feature trusses add interest to the space and the high ceilings create a double volume effect. The view from inside the house looks over the indigenous, landscape garden and pool area, while the covered patio and braai areas add endless options for enjoyment. Each bedroom has large windows to look onto the garden, to ensure that every corner of the house enjoys the beautiful sunshine coming through.

📏 360 m²

🏡 Gentle



SCAN HERE



PRETORIA

+27 (0)12 809 1517

Block 4,
Tijger Valley Office
Park,
Silver Lakes,
Pretoria,
0081

info@jkdesigns.co.za

www.jkdesigns.co.za

@jkdesignssa

@JKDesignsSA

JOHANNESBURG

+27 (0)10 005 2291

Atrium on 5th,
9th Floor,
5th St,
Sandton,
Johannesburg,
2196

